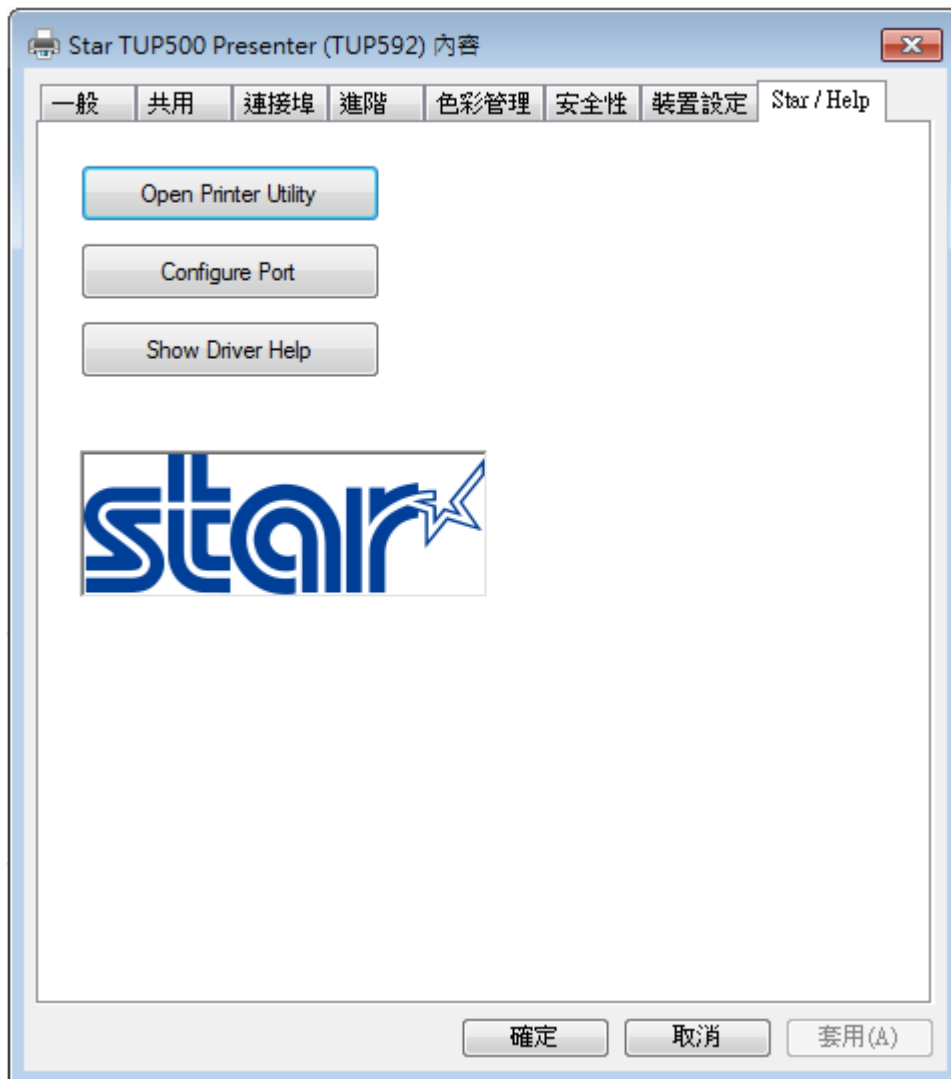
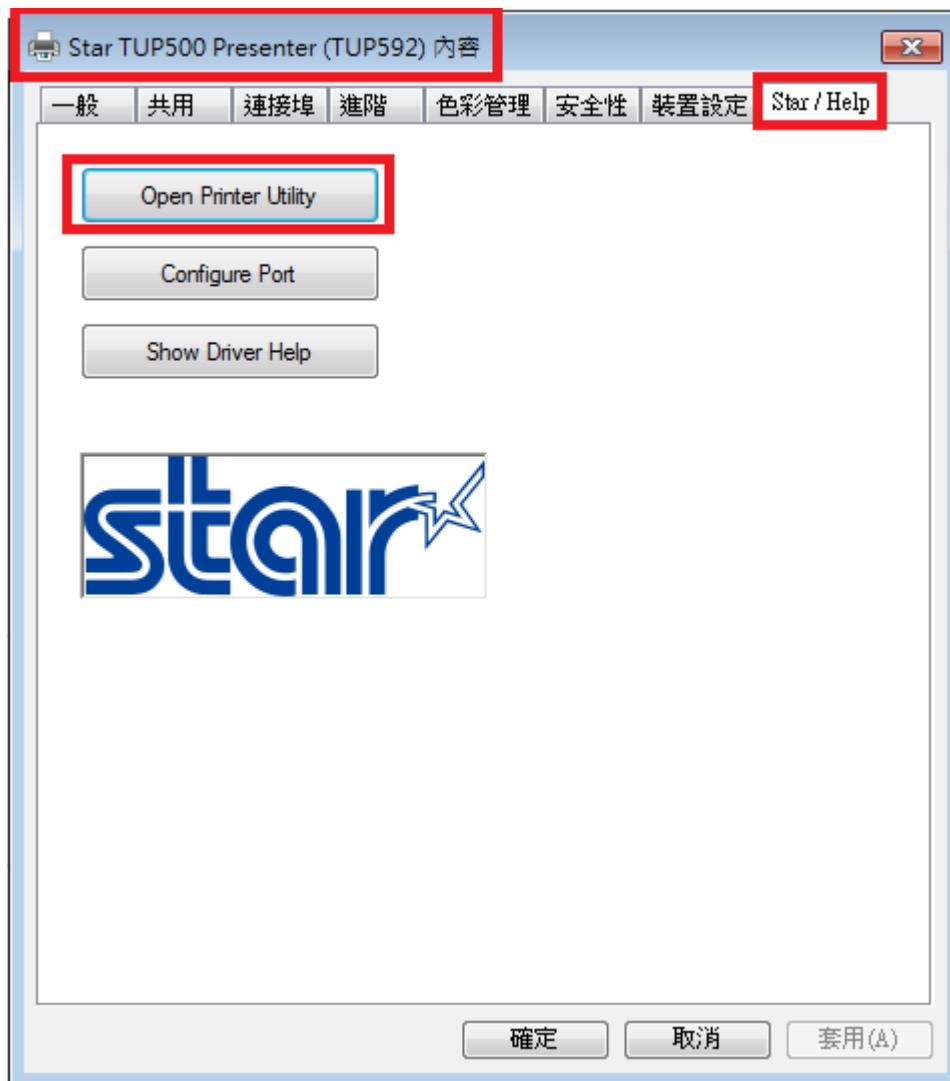


啟用 TUP592U 出紙咀的 LED

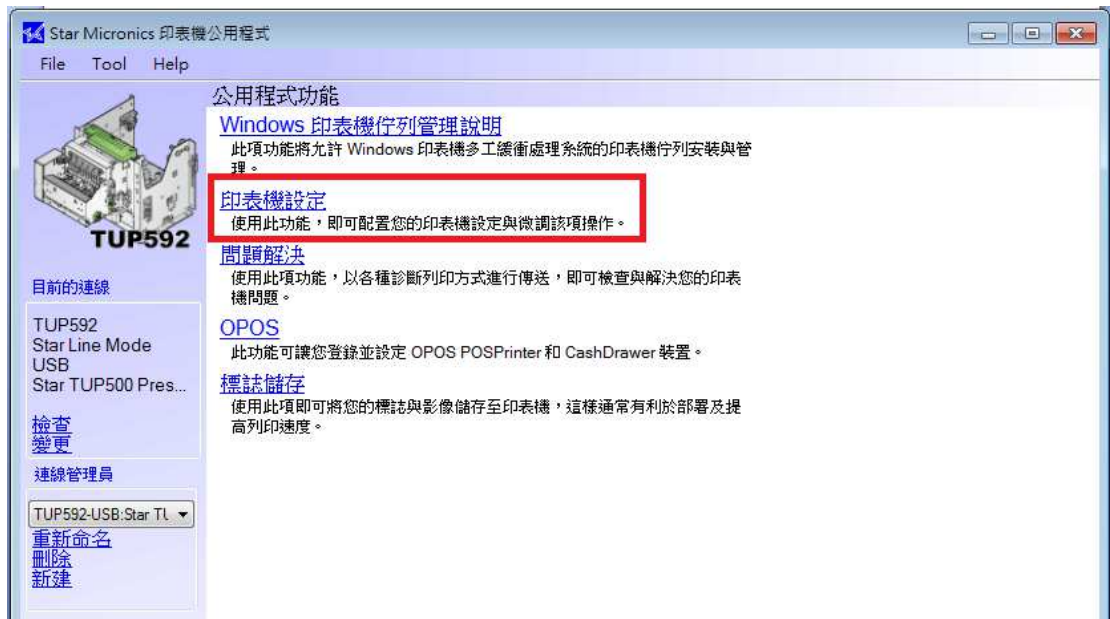
1. 把 TUP592 連接電腦並安裝完成 WINDOWS DRIVER. 打開印表機電源



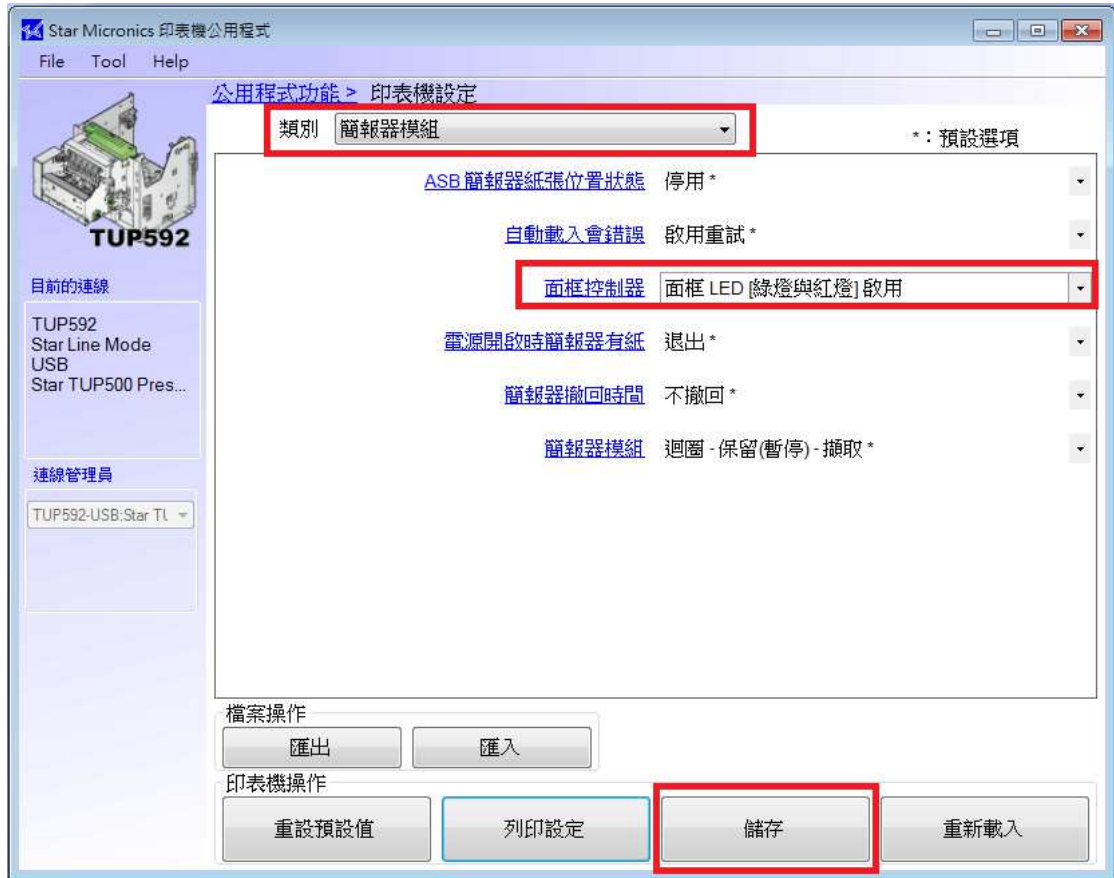
2. 開啟 DRIVER 的內容，然後按 “STAR/HELP”->”Open Printer Utility”



3. 按“印表機設定”



4. 選擇“簡報器模組” -> “面框控制器” -> “面框 LED [綠燈與紅燈]啟用” -> “儲存”



5. 設定完成. 按“列印設定” 便可檢視 LED 燈的功能